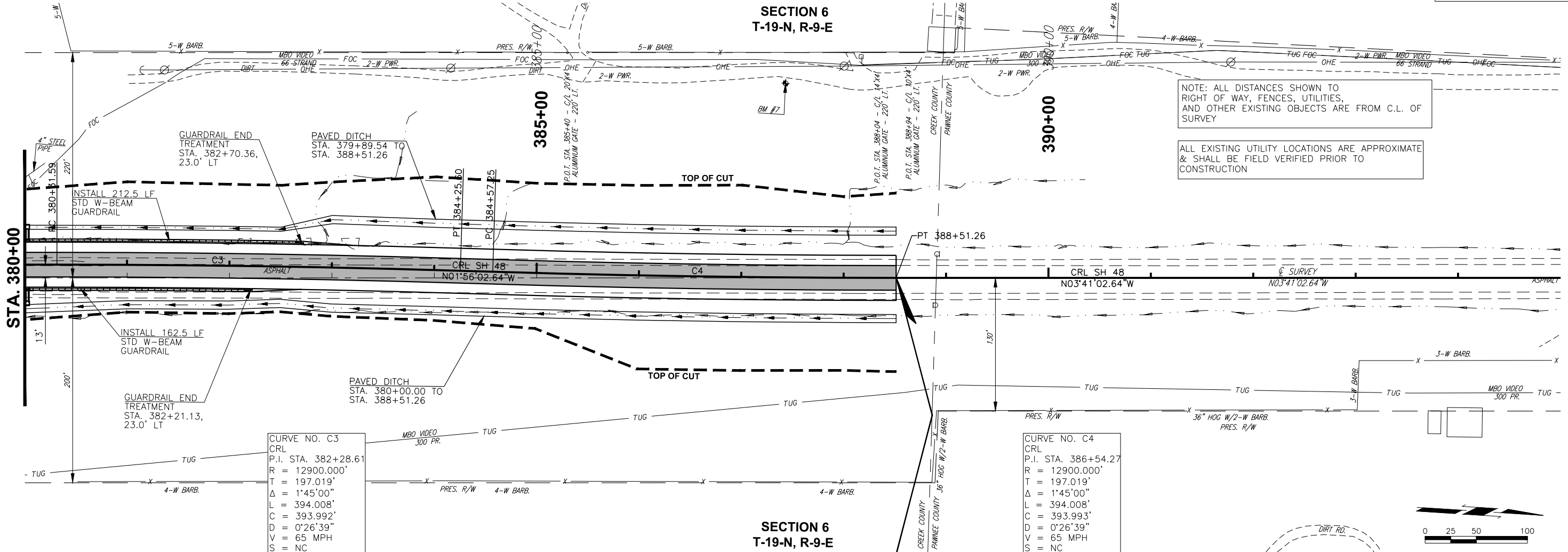


DESCRIPTION	REVISIONS	DATE

**SECTION 6  
T-19-N, R-9-E**



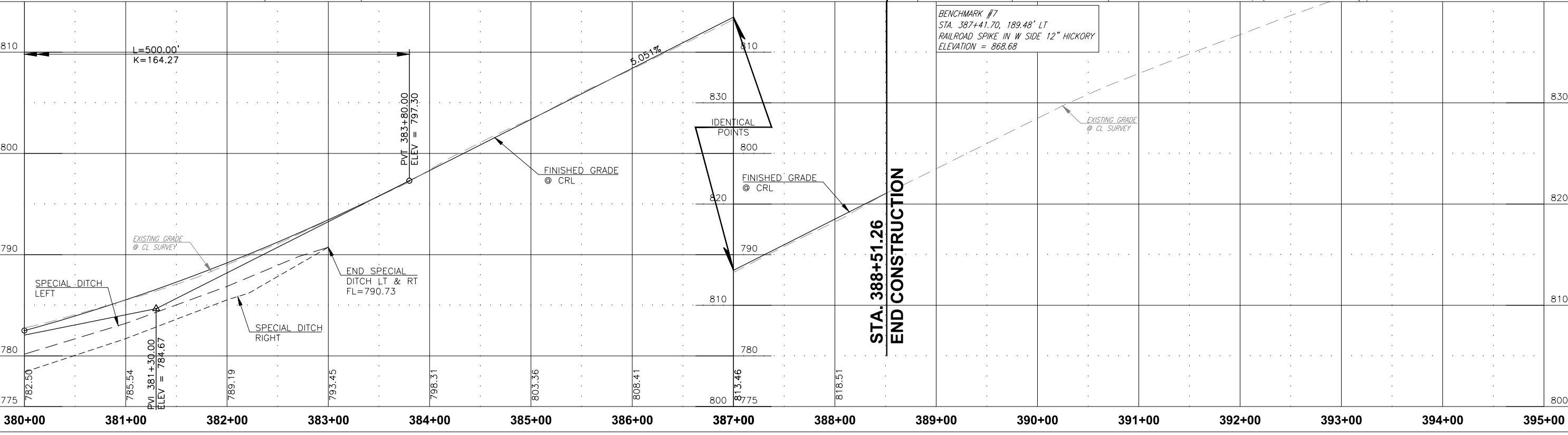
NOTE: ALL DISTANCES SHOWN TO RIGHT OF WAY, FENCES, UTILITIES, AND OTHER EXISTING OBJECTS ARE FROM C.L. OF SURVEY

ALL EXISTING UTILITY LOCATIONS ARE APPROXIMATE & SHALL BE FIELD VERIFIED PRIOR TO CONSTRUCTION

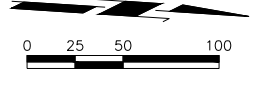
**CURVE NO. C3**  
CRL  
P.I. STA. 382+28.61  
R = 12900.000'  
T = 197.019'  
Δ = 1°45'00"  
L = 394.008'  
C = 393.992'  
D = 0°26'39"  
V = 65 MPH  
S = NC

**CURVE NO. C4**  
CRL  
P.I. STA. 386+54.27  
R = 12900.000'  
T = 197.019'  
Δ = 1°45'00"  
L = 394.008'  
C = 393.993'  
D = 0°26'39"  
V = 65 MPH  
S = NC

**SECTION 6  
T-19-N, R-9-E**



**BENCHMARK #7**  
STA. 387+41.70, 189.48' LT  
RAILROAD SPIKE IN W SIDE 12" HICKORY  
ELEVATION = 868.68



**STA. 388+51.26  
END CONSTRUCTION**

PLOT DATE: May 8, 2017, DRAWING NAME: 16\_P&P\_3.DWG